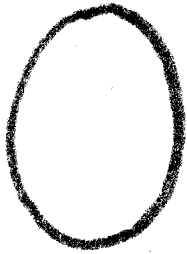
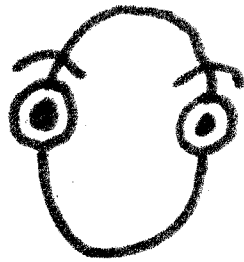


How to draw Environmental Ant

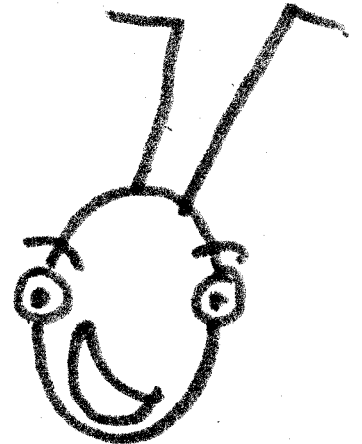
Helpful hint: Draw Environmental Ant in pencil first. Then trace him in pen and erase pencil.



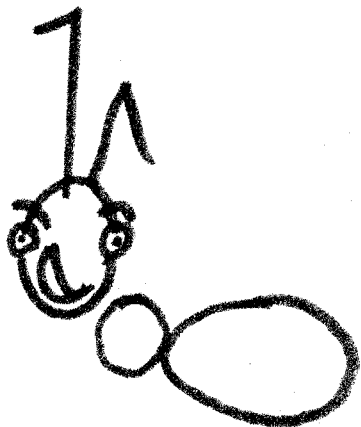
1. Draw an oval head.



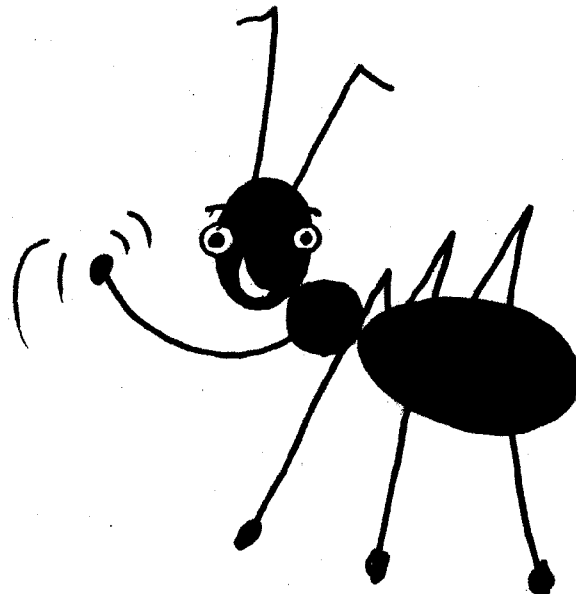
2. Add eyes and eyebrows.



3. Add a crooked smile and two antennae.



4. Draw his body as a circle (his thorax) and an oval (his abdomen).



5. His legs first go up a little bit above his body and then down ending in a small circle for a foot.

6. Color him in black.

NOTE: All ants have six legs. However, you often only need to draw three or four to make him look good.